

KARDEX

ONE FOR ALL.



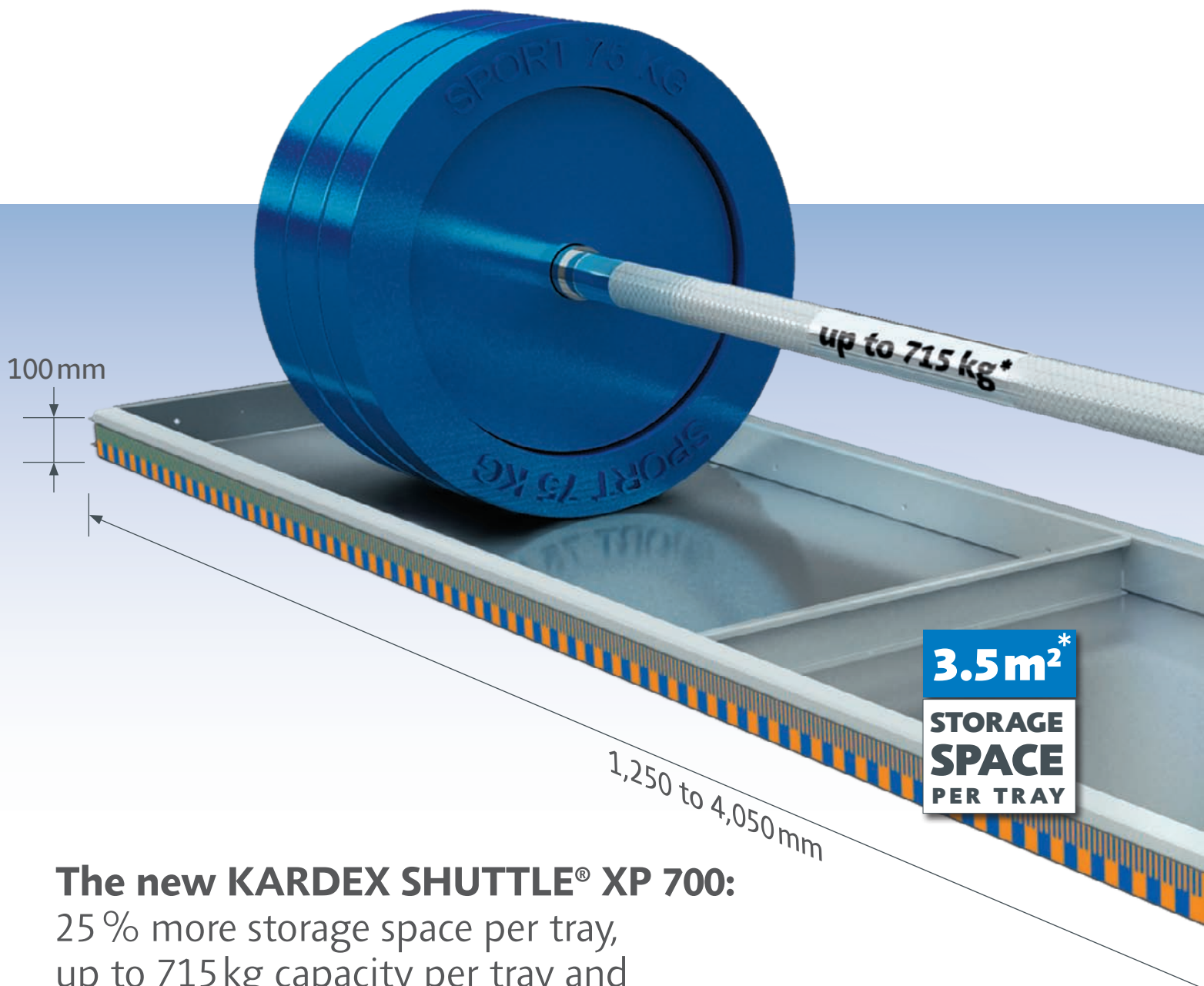
25%*

PLUS!
SAVINGS ON
STORAGE SPACE
PICKING & TIME
715 KG
LOAD PER TRAY

STANDARD SOLUTIONS | VERTICAL LIFT SYSTEMS

NEW | KARDEX SHUTTLE® XP 700

Experience innovation:
The new Kardex Shuttle® XP 700
for heavy and bulky stock items.



The new KARDEX SHUTTLE® XP 700:

25 % more storage space per tray,
up to 715kg capacity per tray and
up to 4,050mm tray length.

The new standard:

**Standard solutions
available with 4 metre
long trays.**

The all new Kardex Shuttle® XP 700 for heavy and bulky stock items adds immensely to your storage capacity, enabling completely new storage strategies and internal logistics. With a total floor area of only 13.7m² and module height of 7m, the new Kardex Shuttle® XP 700 offers 200m² of storage space for items that are 150mm high and 4m long. Go ahead and calculate the total storage space!

New performance features:

**High-speed equals
quicker access.**

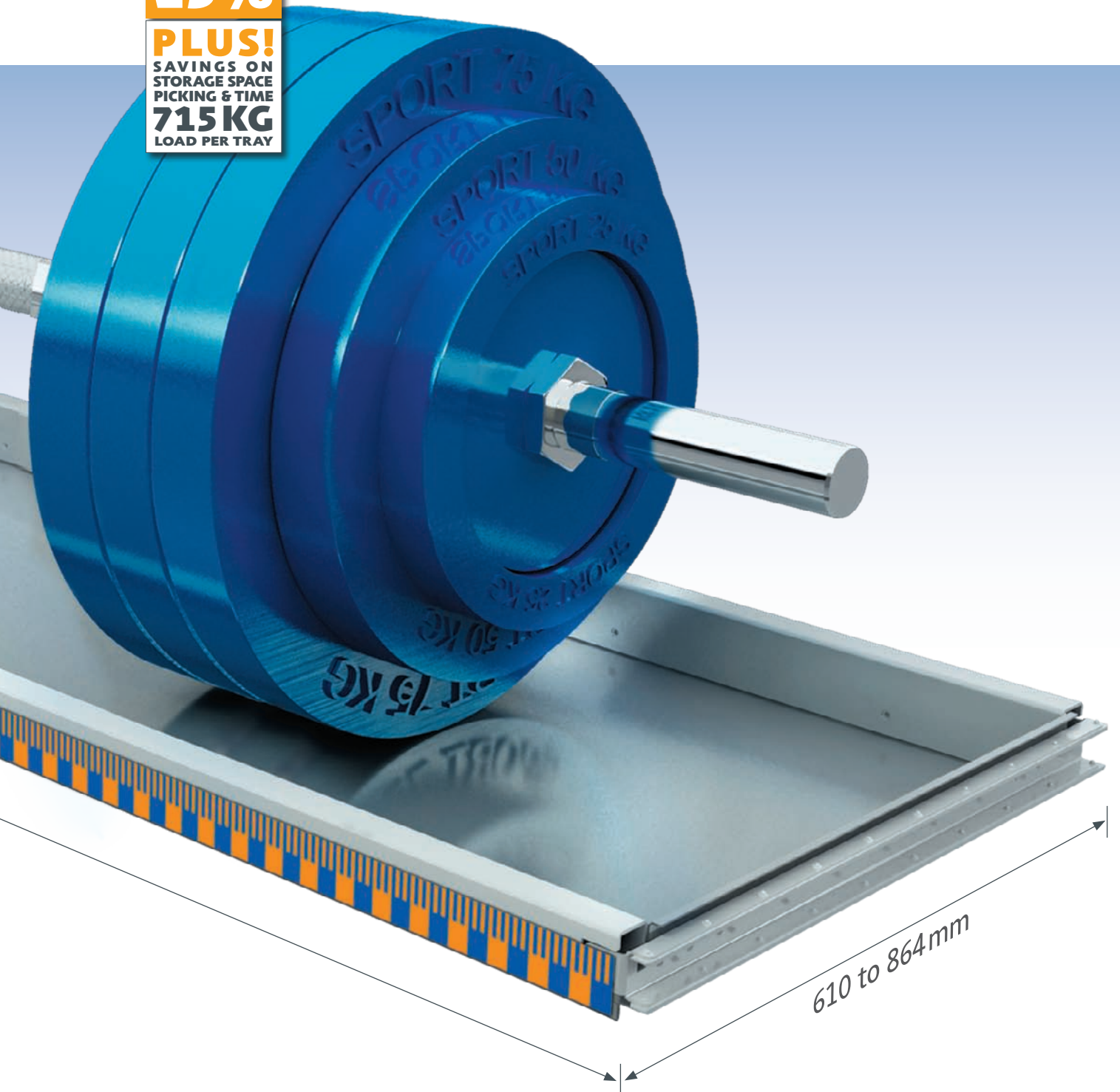
Boost your access speed by up to 25 % compared to standard shuttle equipment with tray lengths of 3,250mm. The new Kardex Shuttle® XP 700 is smoother and quieter and reaches higher speeds; resulting in extremely shortened picking times for your stock operations. With automated tray extraction, you can easily lift heavy loads with cranes or forklifts out of the Shuttle.

KARDEX

ONE FOR ALL.

25%*

PLUS!
SAVINGS ON
STORAGE SPACE
PICKING & TIME
715 KG
LOAD PER TRAY



*For maximum load capacity, storage area, tray length and depth specifics, refer to the table on page 6

NEW | KARDEX SHUTTLE® XP 700

The new high-performance standard for heavy and bulky stock items.



25%* PLUS!
e.g. up to 10 storage boxes
more storage space per tray...!

Automated, high-density storage. Safe, reliable and ergonomic performance.

The Kardex Shuttle® XP 700, a modular, automated high rack storage system, operates on the "goods to man" principle. The operator saves time waiting for the goods than if they were to pick the various items one by one from the stock. Orderliness, neatness and efficiency are the fundamentals of the Kardex Shuttle® XP 700.

Efficiency due to Optiflex (optimum stock density and flexible stock strategies); taller items are detected when they are stored and are indicated on the control panel, enabling the best possible space utilisation.

Moreover, flexible stock strategies are now absolutely no problem with the new dynamic Kardex Shuttle® XP 700 lift system. With the integration of the Power Pick Global software or an external warehouse management system, different strategies, such as permanently assigned spaces, FIFO; height-optimised or shortest route can be achieved.

Kardex Shuttle® XP 700 uses the environmentally friendly, ultramodern 700 XL Drive Extractor. The Kardex Shuttle® XP 700 is downward compatible, meaning all Kardex Shuttle® XP product series trays can be used without problem.

Your advantages:

- Maximum use of space height with minimum use of floor space
- Small 50mm grid for high-density storage with minimum distances between items
- Electronic speed control – up to 1.2m/s
- Height control of stock items
- Automatic shutter doors protect operator and goods
- Downward compatible tray use

NEW | The economical and efficient expansion of your storage space in XXL.
KARDEX Storage Solutions: save time and money.



Increased value: The effective, economical storage solutions for the expansion of your storage space offer significantly improved picking rates and reduced storage costs.

Regardless of whether small parts, vessels, bulk goods, tools, individual parts or other goods, each shuttle easily configures to meet your specific requirements.

- Cans, tubs and drums containing liquids
- Large vessels with granules/pellets
- Injection moulds
- Assembled engine blocks
- Cable drums
- Bar stock up to 4m long
- Small parts with high density and content

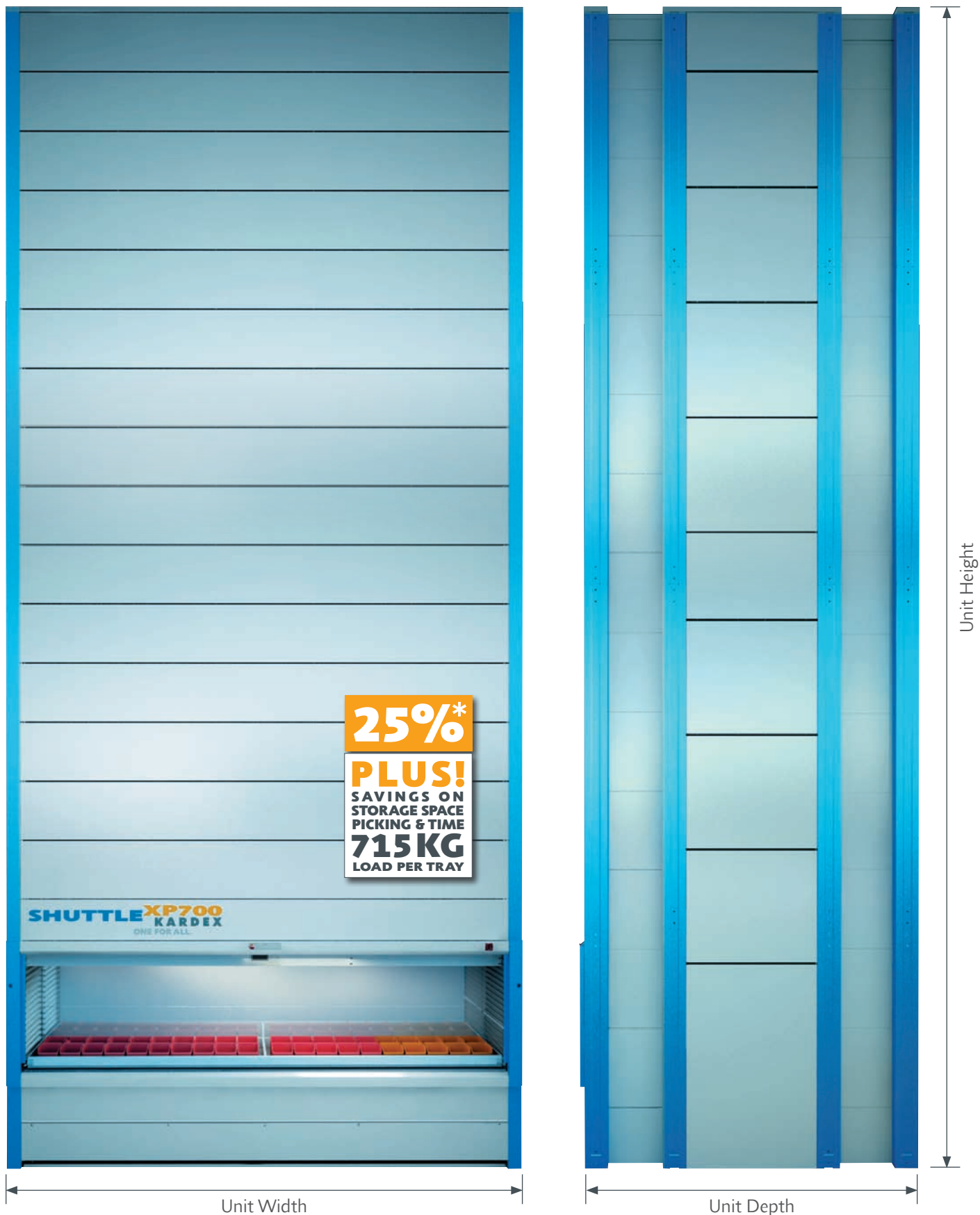


Further information:
www.kardex.com

By the way: AIRBUS also belongs to Kardex's satisfied customers as does Rolls Royce plc. When can we welcome you on board?

NEW | KARDEX SHUTTLE® XP 700

Gain significantly more storage space for heavy and bulky stock items.



KARDEX

ONE FOR ALL.

Tray Depth	Tray Type	Tray Length in mm										
		1250	1650	1850	2050	2150	2450	2850	3050	3250	3650	4050
610	Strong XXL Type 1	715	700	695	690	685	680	665	660	650	640	625
813	Strong XXL Type 1	710	695	690	680	675	660	635	570	510	450	405
	Strong XXL Type 2	x	x	x	x	x	x	650	640	635	620	605
864	Strong XXL Type 1	705	690	685	675	670	655	630	565	505	445	400
	Strong XXL Type 2	x	x	x	x	x	x	645	635	630	615	600

Clear Tray Length	Tray Depth	Storage Area m ²	Unit Width	Unit Depth
1250	610	0.76	1580	2362
	813	1.01		2971
	864	1.08		3124
1650	610	1	1980	2362
	813	1.34		2971
	864	1.42		3124
1850	610	1.12	2180	2362
	813	1.5		2971
	864	1.59		3124
2050	610	1.25	2380	2362
	813	1.66		2971
	864	1.77		3124
2105	610	1.28	2480	2362
	813	1.71		2971
	864	1.81		3124
2450	610	1.49	2780	2362
	813	1.99		2971
	864	2.11		3124
2850	610	1.73	3180	2362
	813	2.31		2971
	864	2.46		3124
3050	610	1.86	3380	2362
	813	2.47		2971
	864	2.63		3124
3250	610	1.98	3580	2362
	813	2.64		2971
	864	2.8		3124
3650	610	2.22	3980	2362
	813	2.96		2971
	864	3.15		3124
4050	610	2.47	4380	2362
	813	3.29		2971
	864	3.49		3124

KARDEX SHUTTLE® XP 700

Technical Information

Unit Dimensions

Width min. 1,580mm
max. 4,380mm

Height min. 2,550mm
max. 20,050mm

Depth min. 2,362mm
max. 3,124mm

Tray Dimensions

Width min. 1,250mm
max. 4,050mm

Depth 610mm
813mm
864mm

Load per Tray

max. 715kg

Control System

C 3000

Further information is available at:
www.kardex.com

KARDEX

ONE FOR ALL.

KARDEX Dynamic Storage Solutions

KARDEX Innovations – Success since 1873.

Save space, time and money. Besides utilising available space to its fullest potential, the dynamic storage and retrieval systems from Kardex significantly increase the productivity and efficiency of your company's operations. Kardex's highly efficient products and services create major labour saving, cost-cutting opportunities.

Many years of experience, a compelling drive to innovate and unrivalled commitment to service constitute the firm basis for Kardex's ability to deliver in the face of any challenge. The record speaks for itself with over 75,000 successfully installed solutions and satisfied operators across the world – in trade, manufacturing and research and development applications.

Today, the focus is on dynamic intralogistic solutions.

You'll find the correct solution quickly with KARDEX.

If you require further information or assistance, you're welcome to visit our website: www.kardex.com



Further information:

www.kardex.com

Worldwide competence in storing and retrieving – Kardex Group

Australia	Ireland
Austria	Italy
Belgium	Netherlands
China	Norway
Cyprus	Poland
Czech Republic	Russia
Denmark	Singapore
Finland	Slovakia
France	Spain
Germany	Sweden
Great Britain	Switzerland
Hungary	Turkey
India	USA



www.kardex.com

Standard products do not include all of the options and configurations mentioned in this brochure. Kardex reserves the right to make design and dimensional changes without prior notice during the term of delivery. Errors or misprinting are excluded.

* For maximum load capacity, storage area, tray length and depth specifics, refer to the table on page 6